


TELECOM
Paris



INSTITUT
POLYTECHNIQUE
DE PARIS

FALL 2020



WELCOME BOOKLET FOR FACULTY AND STAFF

TABLE OF CONTENTS

- 04 • PEDESTRIAN ACCESS**
- 05 • ACCESS BY CAR AND BIKE**
- 06 • ACCESS BY PUBLIC TRANSPORT**
- 08 • PRACTICAL INFORMATION**
- 09 • THE ÉCOLE POLYTECHNIQUE DISTRICT**
- 10 • CAMPUS GUIDE**
- 13 • MAPS OF THE BUILDING**
- 16 • INFORMATION TECHNOLOGY SERVICES**
- 18 • CAMPUS DINING SERVICES**
- 19 • HOTEL ACCOMODATION FOR GUESTS**
- 20 • GETTING AROUND**
- 22 • SHOPS & SERVICES**
- 24 • SPORTS & WELLNESS**
- 25 • SPORTS AND LEISURE WITH ALOES & ATSCAF-PARIS**
- 26 • SUSTAINABLE DEVELOPMENT**
- 27 • PATRONAGE**



WELCOME

Chères et chers collègues,

Nous vivons aujourd'hui individuellement et collectivement un changement majeur : notre déménagement sur le plateau de Saclay. Lancé il y a près de dix ans, ce projet devient enfin concret pour nous tous. Né de la volonté politique de faire du plateau de Saclay une Silicon Valley à la française (lieu majeur pour l'innovation et la recherche en France) notre institut et nos deux écoles sont portés par un projet d'envergure avec une ambition mondiale.

Aujourd'hui, la Direction Générale de l'IMT, Télécom Paris et une partie de Télécom SudParis s'installent à Palaiseau. Nous bénéficions désormais d'un bâtiment flambant neuf, plaisant au plan architectural, et favorisant la convivialité : autant de gages d'excellentes conditions de travail. Nous allons découvrir un nouvel environnement, certes très différent du centre de Paris, de la Butte aux Cailles ou du campus d'Évry, mais qui lui aussi nous offrira de nouvelles opportunités.

Tout d'abord, nous avons la chance de bénéficier de grands espaces et d'un environnement beaucoup plus vert. Dans l'attente du réseau de transport ferré, nous serons au cœur d'un territoire qui met en place des actions en faveur de la transition écologique : bâtiments Haute Qualité Environnementale, réseau de chaleur partagé, mobilités locales douces, économie circulaire...

Nous allons tirer parti d'un écosystème dense et riche pour la formation, la recherche et l'innovation, au cœur de l'Institut Polytechnique de Paris, en coopération avec l'Université Paris-Saclay, et en relations directes avec les grands instituts de recherche que sont le CNRS, l'INRIA ou encore le CEA, et avec les centres de recherche et développement de fleurons de l'économie française (EDF, Danone, Thales, Safran et bientôt Total, etc.). Ces liens se feront, sur tout le plateau, avec 65 000 étudiants, 10 000 chercheurs et professeurs et des milliers de collaborateurs d'entreprises, rassemblant près de 20% de la recherche française sur le territoire d'ici 2020 et, au-delà, potentiellement avec les autres écoles de l'IMT dans les territoires.

Enfin, nous aurons tous l'occasion de contribuer à la vie de ce nouveau pôle. En effet, si les bâtiments poussent sur le plateau, ce sera à nous et à tous nos collègues aux alentours de créer une vraie vie sur le campus. Par nos idées, nos envies, nos projets, nous pourrons agir activement pour faire de ce nouveau quartier *notre* quartier.

Ce livret a été conçu pour vous aider à prendre vos marques dans notre bâtiment et plus largement sur le plateau de Saclay. Vous y trouverez un grand nombre d'informations utiles pour vous repérer, vous déplacer, vous restaurer ou encore vous détendre. Nous restons bien sûr à votre écoute pour toute remarque et suggestion.

Nous vous souhaitons une excellente installation et comptons sur vous pour vous approprier nos nouveaux locaux !

Odile Gauthier, Directrice Générale de l'IMT
Yves Poilane, Directeur de Télécom Paris
Christophe Digne, Directeur de Télécom SudParis

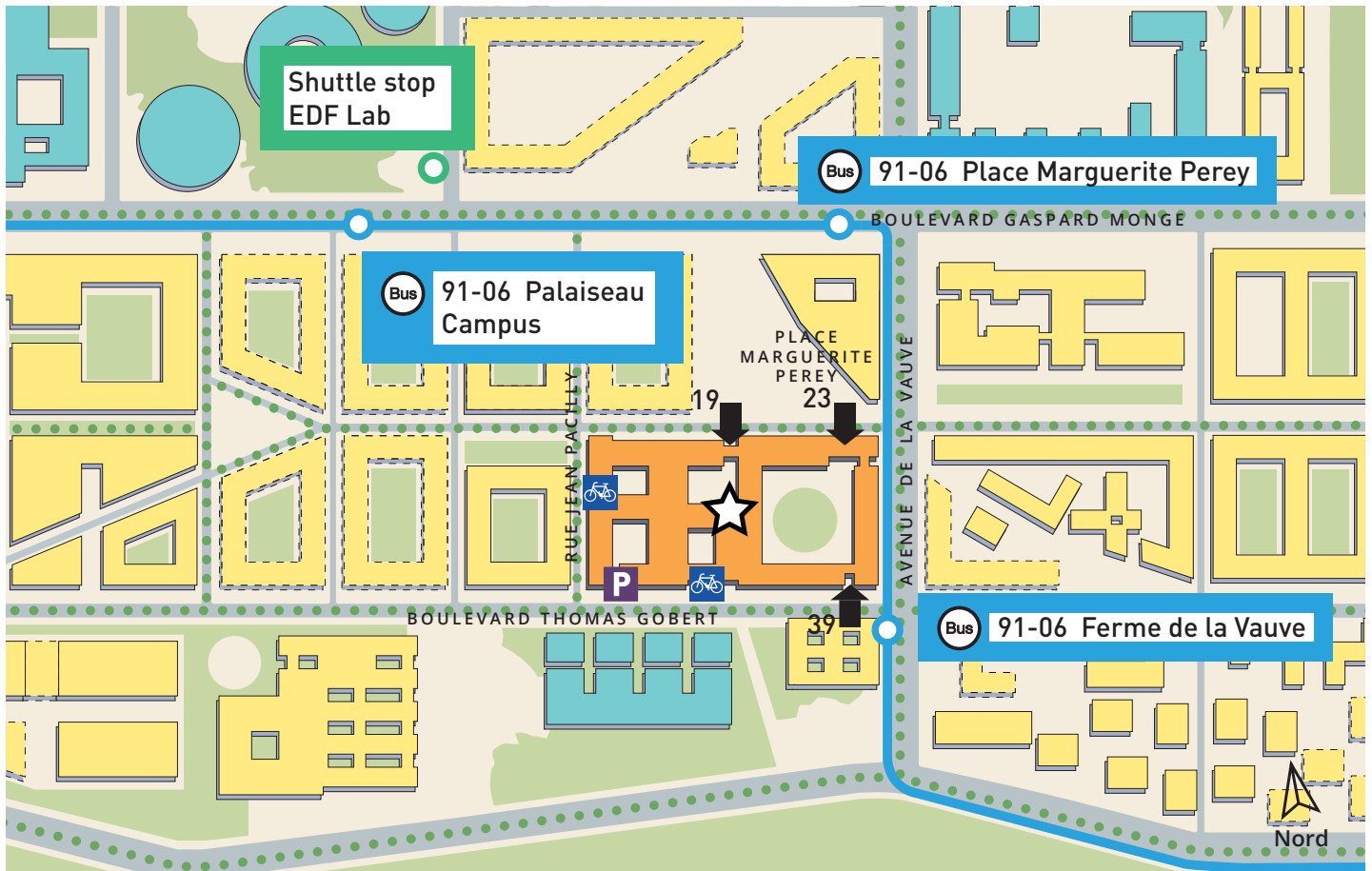
PEDESTRIAN ACCESS

The school is located at 19 place Marguerite Perey, 91120 Palaiseau, France
GPS coordinates: 48.712793, 2.199441

Opening hours of the main reception desk: 7:00am to 8:00pm, Monday to Friday
Télécom Paris Reception Desk: +33 1 75 31 92 01
Building security: +33 1 75 31 40 18

★ The reception desk is at the main entrance: 19 place Marguerite Perey.
Building access is also possible at:

- ➡ 23 place Marguerite Perey
- ➡ 39 boulevard Thomas Gobert



ACCESS BY CAR & BIKE



• By car

> When driving from Porte d'Orléans or Porte d'Italie: via motorway A6:

- Follow the signs for the A6a-A10-E5 towards Bordeaux-Nantes-Lyon.
- At the junction with the A126, continue on the A10, towards Orléans.
- Using the left lane, exit in the direction of N444/Versailles/Igny/Cité scientifique.
- Continue on the A126, then follow the D36 road.
- At the roundabout take the 2nd exit onto Avenue de la Vauve/D128 towards Orsay/St Aubin/Gif-sur-Yvette.
- Turn right onto Thomas Gobert Boulevard.

The entrance to the underground campus parking lot will be on your right.

> When driving from Pont de Sèvres via the N118 road:

- Take the N118 to exit 9 towards Orsay-Le Guichet.
- At the roundabout, take the 4th exit towards the D128 road.
- At the roundabout, take the 1st exit onto Thomas Gobert Boulevard/D128

The entrance to the underground campus parking lot will be on your left.



• By bike

Bike paths (shown in green, dotted lines on the opposite page) allow for safe travel on the Plateau de Saclay.

They allow access to the Moulon District, but also to the surrounding towns of Palaiseau, Massy, Saclay, etc. Moreover, a Zoov electric bicycle station is located at the base of our building. About twenty bikes are available to ensure the connections between the Camille Claudel district and the Moulon District (more information is available on page 21).

WHERE YOU CAN PARK:

The underground campus parking lot is open Monday through Friday from 6:00am to 10:00pm.

Access to the parking lot is available upon presenting your **employee badge** at the entrance at **31 boulevard Thomas Gobert**.

317 parking spots are available for cars.

8 spots are provided for **motorcycles** and **8 handicap parking spots** are also available.

These parking spots are not assigned.

**Please note: around 15 spots are reserved for recharging electric vehicles.
15 more due to be added in the future.**

The opening of a nearby public parking lot is expected in the coming months. It will accommodate vehicles when the underground parking lot is full.

Terms and rates will be available as soon as possible.

Two bike-parking stations, within the building, are accessible at the entrances:

- 33 boulevard Thomas Gobert
- 15 rue Jean Pacilly (soon to be reachable)

These stations have a total capacity of **130 bikes**.

ACCESS BY PUBLIC TRANSPORT



- By shuttle bus (about 30 minutes from Porte d'Orléans)

Faculty and staff members have access to a free shuttle upon showing their employee badge. This line, which is run by the company SAVAC, is now made up of 9 shuttles in the morning and 7 shuttles in the evening. All the shuttles are WIFI equipped.

Départ Paris - Porte d'Orléans - Gare routière Av. de la Porte d'Orléans	7h15	7h35	7h50	8h00	8h10	8h20	8h30	8h40	8h50	9h10
Arrivée - horaire indicatif EDF Lab/Danone/IMT Rue Rosalind Franklin - Zone Arrêt	7h46	8h06	8h21	8h31	8h41	8h51	9h01	9h11	9h21	9h41

Départ EDF Lab/Danone/IMT Boulevard Gaspard Monge	16h59	17h14	17h29	17h44	17h59	18h29	18h59
--	-------	-------	-------	-------	-------	-------	-------

Heavy traffic in the direction of Paris can result in longer journeys, about an hour for the evening shuttles.



Savac and Zenbus make life easier for passengers thanks to features such as seeing the precise location of the next shuttle using one's computer or smartphone as well as WIFI access on the buses.





• By public transport

> From the Massy-Palaiseau RER B and RER C station (15 minutes) - Garnier bus station exit.

At the station, take the exit «Gare routière Garnier» and take the Albatrans Express bus 91.06 or 91.10. Get off at the bus stops **Ferme de la Vauve** or **Place Marguerite Perey**.

> From the Lozère RER B station (25 minutes)

Take the pedestrian path, which includes about 300 steps (a distance of 1.5km). Go up the stairs to École polytechnique then walk to the Télécom Paris building.

> From the Guichet RER B station (25 minutes)

Take the pedestrian path, which includes about 300 steps (a distance of 1.5km). Go up the stairs to École polytechnique then walk to the Télécom Paris building.

HOURS FOR BUS 91.06

The first bus leaves from the Massy-Palaiseau station at 6:00am.

Buses come about every 3 to 4 minutes during rush hour (6:56am – 10:00am and 4:00pm – 7:00pm).

The last bus travelling to the Massy-Palaiseau station leaves at 12:14am.

Outside of rush hour times, buses come about every 15 minutes.



• Carpooling with **KAROS**



Améliorez vos trajets

In addition to the public transport offer, IMT, Télécom Paris and Télécom SudParis have joined forces with the **Karos** carpooling platform. This solution improves the coverage for under-served areas by public transport.

The Karos platform has several advantages:

- An optimization of travel times for carpoolers thanks to artificial intelligence,
- A reduction in carbon emissions,
- Savings on all journeys:

For passengers: with a Navigo pass, two trips per day are free. Without a Navigo pass, the price of each trip costs 1.49€ (up to 30 km).

For drivers: the price paid to the driver is a minimum of 2€ per trip and per passenger, then an additional €0.10 to from the 21st kilometer.

Feel free to download the application to learn more.

PRACTICAL INFORMATION

Emergency number : 01 75 31 40 18

On our campus, all numbers start with: 01 75 31...

MAIN RECEPTION DESK

The main reception desk is at the main entrance of the building at 19 place Marguerite Perey. It is open from 7:00am to 8:00pm during the week.

Opening hours can be extended, including on weekends, during special events, upon a request and approval of the management.

After 8:00 pm, the entrance and exit is via 31 boulevard Thomas Gobert.

Reception desk for Telecom Paris 01 75 31 92 01

Reception desk for the CRDN Library 01 75 31 95 50

Reception desk for Continuing Education 01 75 31 96 10

SECURITY DESK

Location : 0C77

Contact : 01 75 31 40 18

MAILROOM AND DELIVERIES

The deposit and retrieval of mail takes place in room 2A450.

The mailing address is **19 place Marguerite Perey, CS 20031, 91123 Palaiseau Cedex.**

Deliveries are from 7:00am to 8:00pm.

Address to be given to delivery companies:

31 boulevard Thomas Gobert, 91120 Palaiseau

CAMPUS NURSE

Location: 0C73

SOCIAL AND WELFARE ASSISTANCE

A welfare officer is available to all staff members. She provides personalized support depending on the difficulties you may encounter (financial, social, administrative, etc.).

Contact: 01 39 49 63 86 - assistantssociaux@cigversailles.fr

Location on campus: 0A258

CAMPUS PSYCHOLOGIST

Sylvie Fercq, a psychologist who specializes in the field of work, offers employees who encounter difficulties on the job the opportunity to freely express themselves in individual interviews.

Contact: 06 19 42 63 12 – email: travailetsante@aol.fr

Location on campus: 0A258

EMPLOYEE UNIONS

UNSA-CEFI/CFE-CGC: 3C01

CGT-SUD: 5B02

CFDT: 5B06

SPORTS AND LEISURE ASSOCIATION: ALOES

Office hours: half a day every other Thursday.

Location: 2A446

More information about the benefits of joining ALOES is available on page 25.

OFFICIAL-USE VEHICLE

To book an official-use vehicle, the user must submit a "ticket" on GLPI (see page 17 under "logistics" for more information) at least 72 hours in advance and indicate: the reason for booking, travel location, dates and scheduled departure and return times of the vehicle, as well as specify the words *Je certifie être en possession d'un permis de conduire valable et valide.* ("I certify that I am in possession of a valid driver's license.")

If the application is accepted, the key and registration of the car can be collected in the mailroom at 2A450.

CATERING

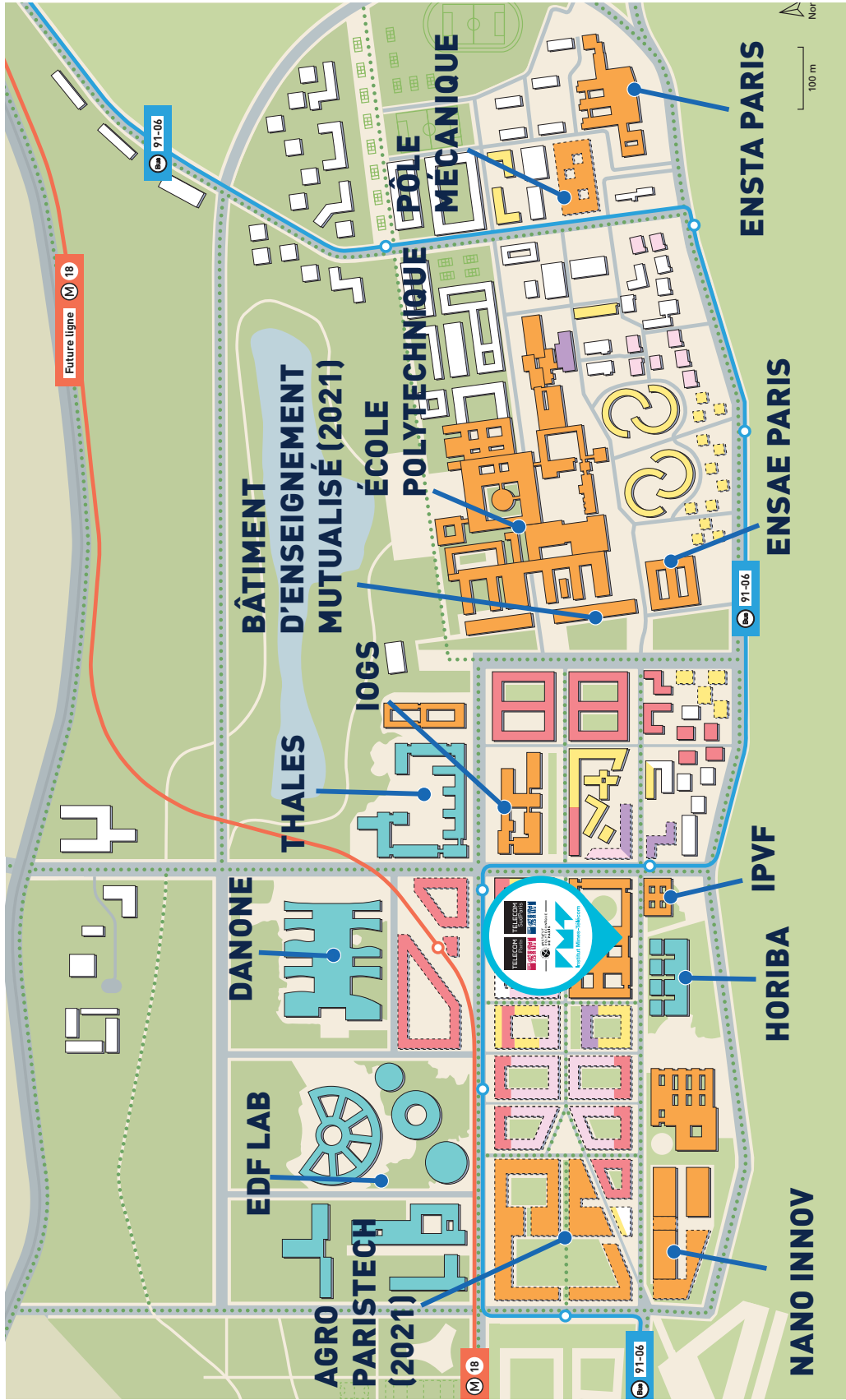
The service provider for all users of the campus will be Elior for the collective catering, meal trays and breakfasts.

Requests must be addressed to both contacts below in copy:

- Fabien Forat — fabien.forat@elior.fr — 06 08 16 48 81

- Gérald Lemaître — av061260@elior.com — 06 63 78 74 86

THE ÉCOLE POLYTECHNIQUE DISTRICT

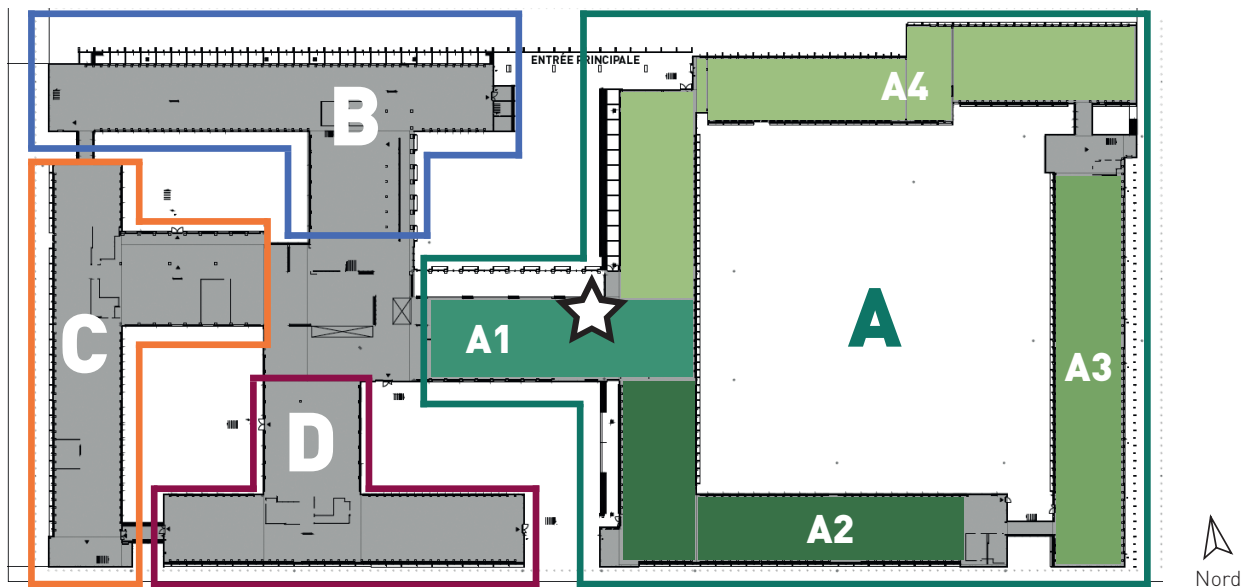


CAMPUS GUIDE



Inside the atrium, the main lobby branches out into the communal, teaching, and research areas. The property is composed of four buildings, A, B, C and D, is five storeys high and includes an underground basement level.

★ The main reception desk is located on the ground floor of Building A1, which leads into the atrium.



Office and room numbers are based on the following model:

For buildings B, C et D



For building A



Below is a list of the main services and their location in the building:

Direction	5A401, 5A405 and 2D14
Human Resources Department	5A407 to 5A420
Secretary-General	5A402, 5A404 and 5A406
Secretary-General – Building and Logistics Department	2A329 to 2A344
Secretary-General – Financial Department	2A446 to 2A498

Teaching and Research Departments

Communication & Electronics Department — COMELEC	3B, 3C and 3D
Communication & Electronics Department — COMELEC —	3C22
Admin Computer Science & Networks Department — INFRES	5A101 to 5A109, 5B, 5C and 5D
Computer Science & Networks Department — INFRES — Labs	-1
Continuing Education - Specialized Masters@	4B, 4C and 4D
Dean of Studies Department	-1
Economics & Social Sciences Department — SES	3A228 to 3A248
Image, Data, Signal Department — IDS	3A251 to 3A265, 3A3, 3A459 to 3A486
Image, Data, Signal Department — IDS — Labs	2B16 to 2B56, 2C19 to 2C24
Languages and Cultures Department	2C13 to 2C17 and 2C26 to 2C48
Research Department	3A433 to 3A437, 3A439, 3A445, 3A449, 3A451 to 3A454
Research and Pedagogy Showroom	0B03

Support services

Communications Department	2C49 to 2C56
Development and Partnerships Department	3A438 to 3A443
Innovations Department	3A444 to 3A458
International Relations Department	2C55 to 2C64
IT Systems Department (DSI)	2A203 to 2A263, 2A306 to 2A326, 2A403 and 2A405
Télécom Paris alumni Program	2A440

Main reception	Ground floor
Social worker and welfare counselor	0A258
Sports and leisure association: ALOES	2A446
“The Weekly” Cafeteria	0A4
“The Worko” Cafeteria	2A1
CRDN — Library	2A1, 2A2, 2A4
The e-Lab	2A237
The FabLab	2A237
Student’s Common Room	0A333
Infirmary	0C73
Doctor	0A258
Building Security	0C77
“The WAN” Restaurant	0A4
Multipurpose exercise studio	0A301
Boardroom	0B05
Studio Design	0B03

**ESPACES
COLLECTIFS
ET DE
CONVIVIALITÉ**

OUR CAMPUS HAS:

13

VIDEO CONFERENCE ROOMS

MEETING ROOMS

39

34

LAB ROOMS

AMPHITHEATERS

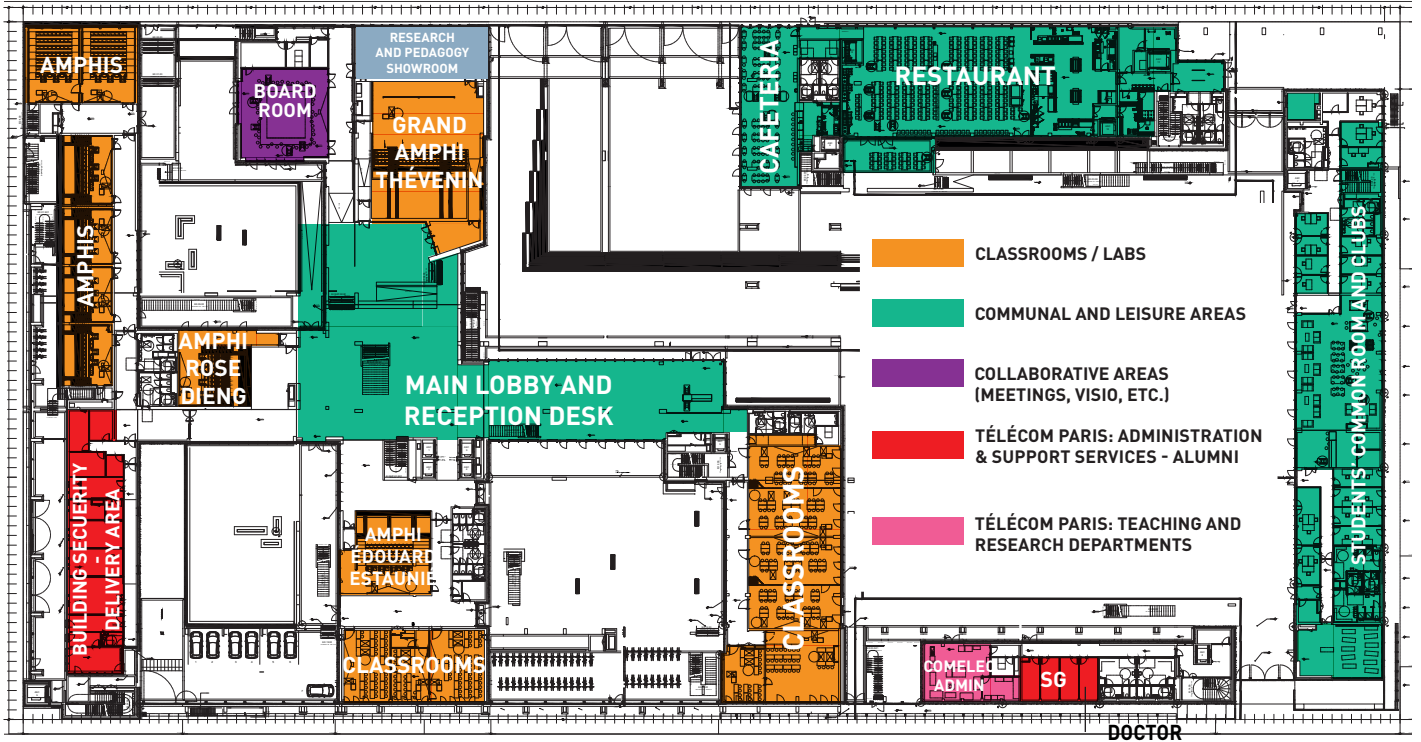
9

33

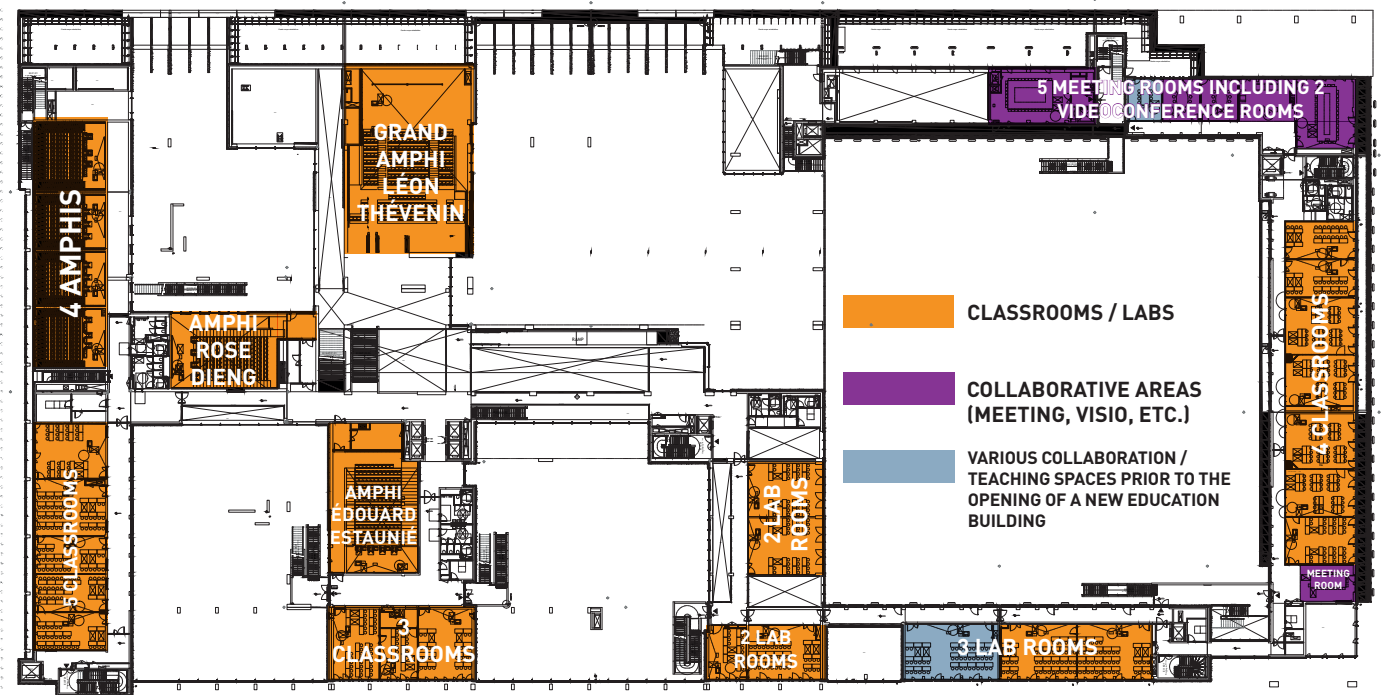
CLASSROOMS

PLANS DU BÂTIMENT

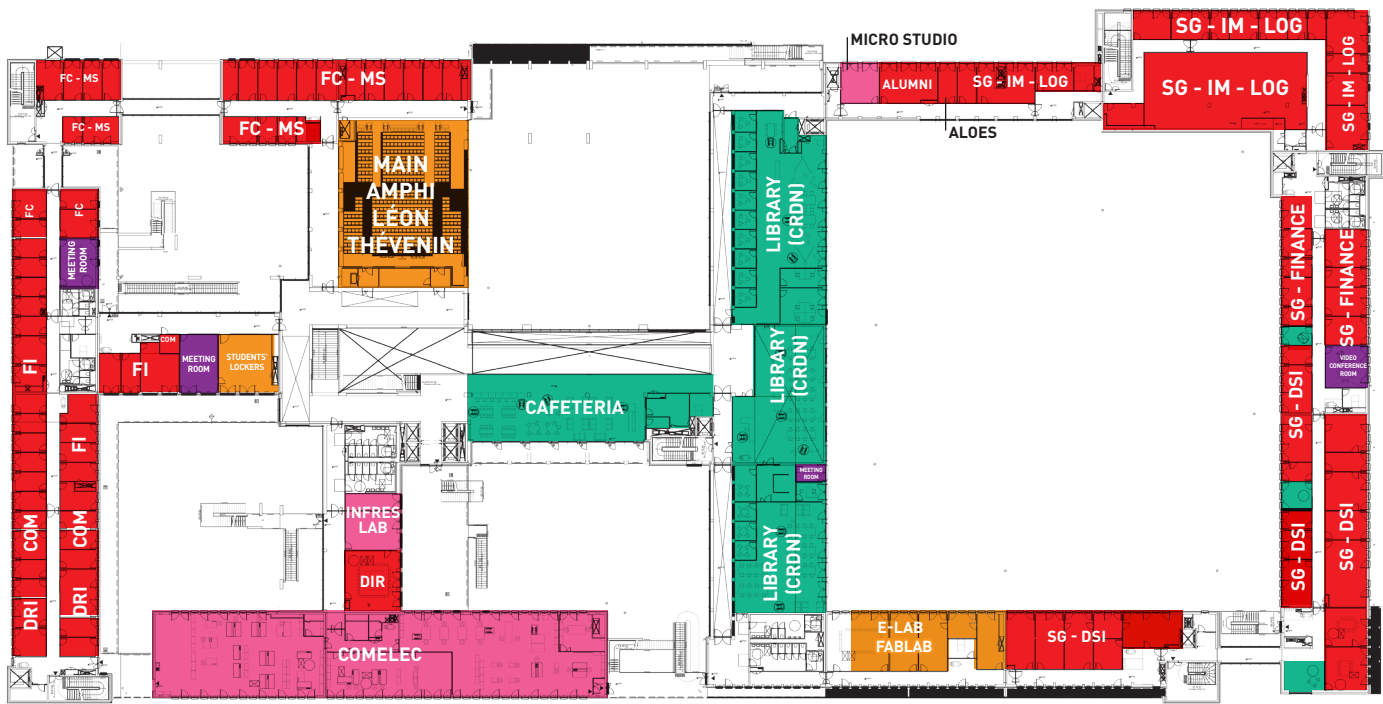
GROUND FLOOR



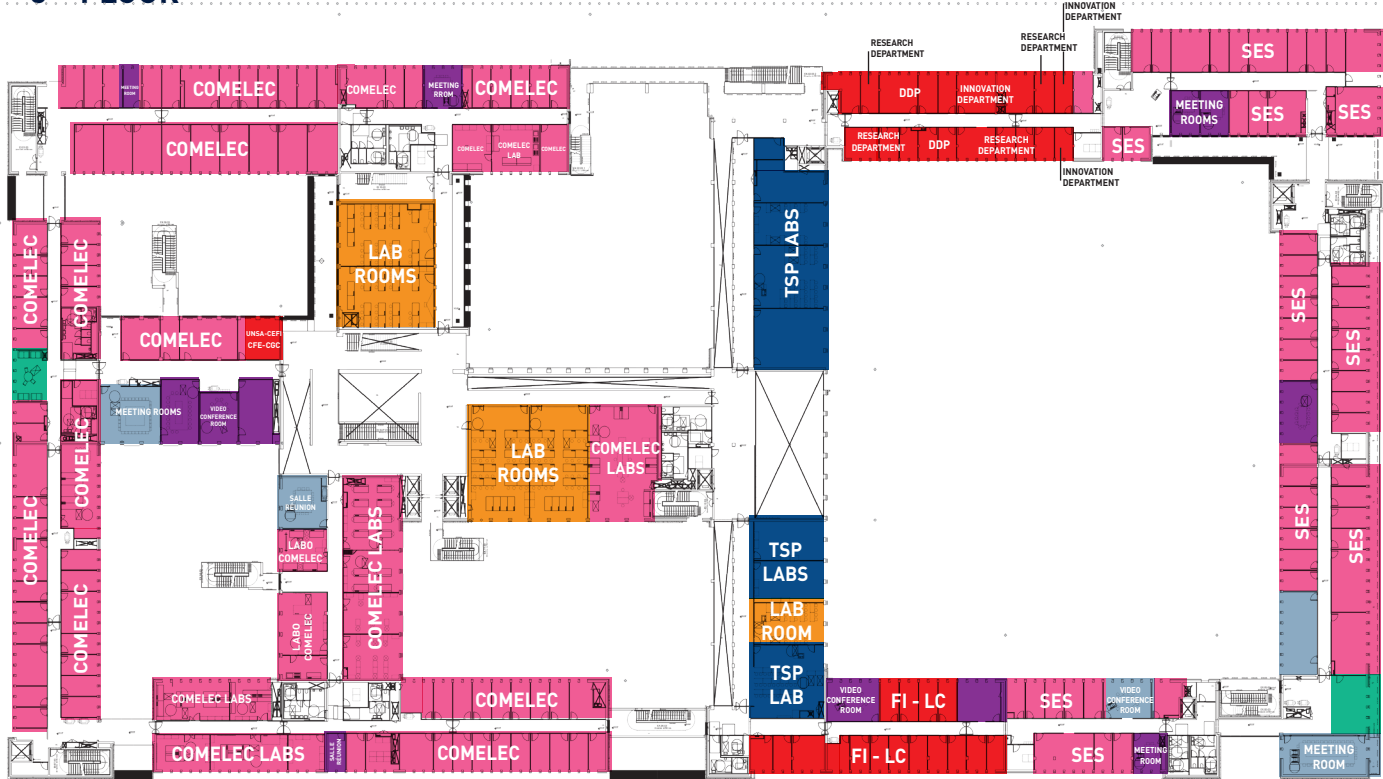
1ST FLOOR



2ND FLOOR



3RD FLOOR



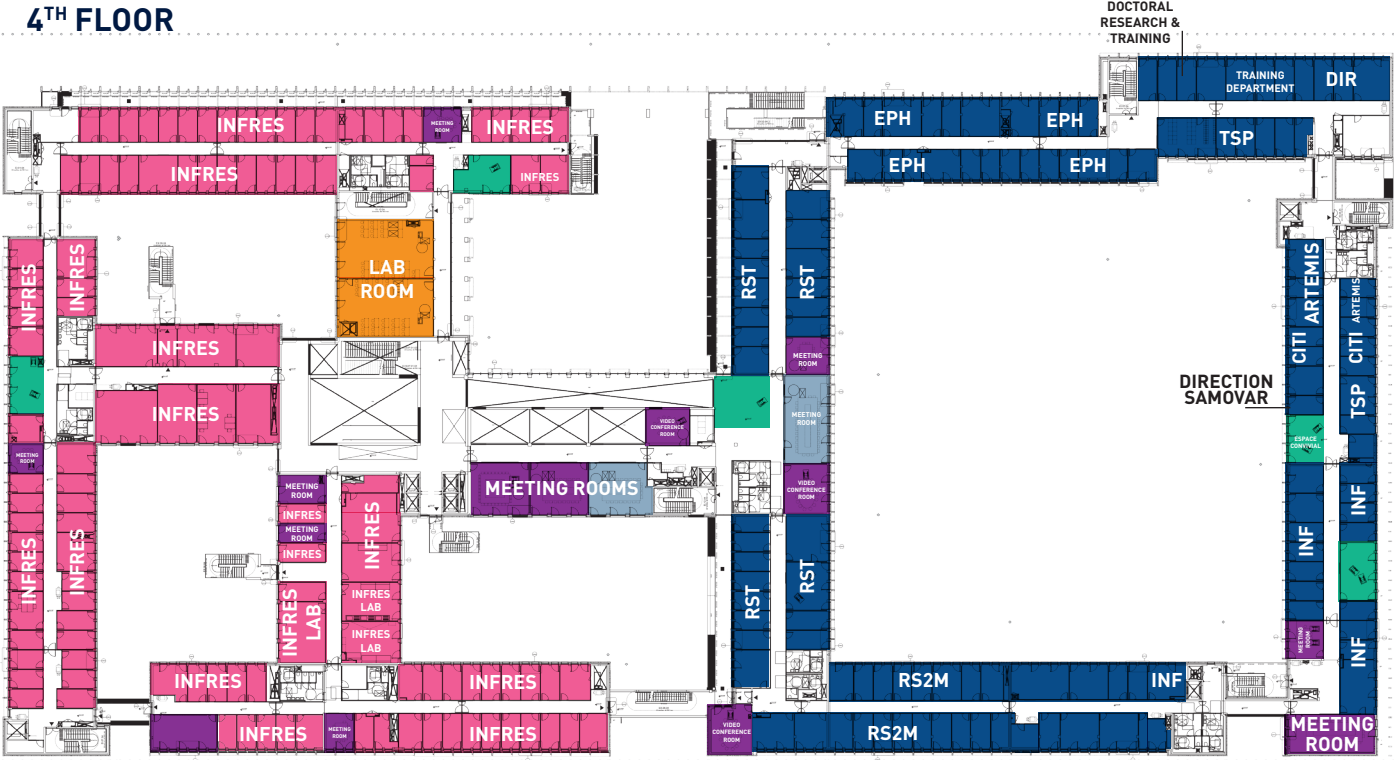
TÉLÉCOM PARIS: TEACHING AND RESEARCH DEPARTMENT

TÉLÉCOM SUDPARIS

IMT GENERAL DIRECTION

VARIOUS COLLABORATION/TEACHING SPACES PRIOR TO THE OPENING OF A NEW EDUCATION BUILDING

4TH FLOOR



5TH FLOOR



INFORMATION TECHNOLOGY SERVICES

RESERVING ROOMS WITH SYNAPSES

Room reservations can be made using SynapseS at this website: <https://synapses.telecom-paris.fr/>

52 meeting rooms (including 13 equipped with videoconferencing technology) can be reserved (multipoint video conferences are exclusively via a RENATER uplink).

9 IT Systems (DSI) TP rooms are also available for booking.

The lab rooms and classrooms are all equipped with a lectern and computer.

Requests not subject to certain conditions are automatically validated.

The following can be booked under certain conditions:

- 3 executive boardrooms
- 4 lab rooms and 1 Communication & Electronics Department (COMELEC) lab room
- 2 Image, Data, Signal Department (IDS) lab rooms
- 2 Computer Science & Networks Department (INFRES) lab rooms

To make a reservation request using SynapseS, you must log in, click on the *Salles* (rooms) tab at the top of the page, then click on *Mes demandes de réservation* (my reservation requests). From there fill out the *Nouvelle demande de réservation* (new reservation request) form, then click on *enregistrer* at the bottom of the page.

If the approval for a restricted room (those under certain conditions) is delayed, you must contact the moderator in the room and not the IT Department (DSI). Room moderators are indicated on the room reservation schedule.



Attention! Reserving amphitheaters as well as multiple rooms for events must continue to be done through the Eole form available on: <https://eole.telecom-paris.fr/vos-services/logistique/resa-pour-evenement>

COLLABORATIVE PRESENTATION INTERFACE WITH KRAMER VIA

Like the amphitheaters, the classrooms and meeting rooms are equipped with a screen-sharing device, adapted to the span of each space. Speakers can connect their computers to a digital monitor screen, either at using a multi-port cable, or through the VIA Kramer application dedicated to screen sharing via Wi-Fi.

Help on how to use this application is available on Eole ("Tips & Tricks" section of the Digital Services) and in every room in the building.



MAKING ONLINE REQUESTS AND REPORTING INCIDENTS, LOGISTICS, ETC. WITH *SOS GLPI*

For all faculty and staff, the internal SOS GLPI platform is the right approach to have for any request, or as soon as an incident occurs. It ensures your request can be seen to as efficiently as possible by the right member of staff on campus.

This service is available at this URL: <https://sos.telecom-paris.fr/>

You can use the *SOS GLPI* platform to make the following requests and incident reports:



- The **building** premises: heating, lighting, plumbing, locksmith, blinds and curtains, etc.



- **Logistics**: cleaning, moving furniture, archives, room configuration, conferences, reservation of parking spaces, request for an official-use vehicle, etc.



- **IT**: office applications, access to applications, videoconferencing, etc.



- **Communication**: posters, leaflets, advice, distribution of information on the website, logo, graphic charter, advertising goods, etc.

To make your request, simply click on **Créer un ticket** ("Create a ticket"). This option is accessible on all the pages of the platform, in the top menu. You will then have to narrow down your request using the various options, and write your explanation in the comments area provided .

USING YOUR EMPLOYEE BADGE

In Palaiseau, your employee badge allows access to the campus buildings as well as printing, photocopying and scanning services, library loans, and restaurant and cafeteria payments.

As with the parking lot entrance, all offices are equipped with electronic locks where your badge is the key.

In addition, your employee badge gives you access to other IP Paris schools, as well as their dining locations (see next page).

Please note: badges must be updated every day by badging at one of the main terminals (see list below). These updates then authorize access to the campus for 24 hours.

The main terminals are located:

- on the turnstiles at the main reception desk,
- on the elevators at the underground parking lot,
- at the entrance of the restaurant.



CAMPUS DINING SERVICES

There are three dining facilities at your disposal.

“THE WAN” RESTAURANT

Collective dining services are provided by Elior. The restaurant is entirely self-service and is located on the ground floor of the A4 building. It serves up to 800 meals a day. It has 280 seats, including seven for individuals with disabilities. Its opening hours are from 11:30am to 1:45pm.

Payments can be made with your employee badge in the campus restaurant and cafeterias, which are managed by Elior. You can add credit to your badge by paying cash or credit card with a cashier at one of the dining locations.

“THE WEEKY” CAFETERIA

Located on the ground floor, just next to the main restaurant, this dining facility seats up to 80 people and offers pastries, hot drinks, and snacks.

It's open every day from 8:00am to 4:00pm nonstop.

“THE WORKO” CAFETERIA

Located near the CRDN Library on the 2nd floor of Building A, this snack bar seats up to 12 people and is open from 8:00am to 6:00pm.

IP PARIS DINING SERVICES

ÉCOLE POLYTECHNIQUE*

Le **MAGNAN** is a École polytechnique restaurant located about 15 minutes on foot from our building. It is open from 11:30am to 2:00pm every day.

The **Safran** cafeteria in the main lobby also offers sandwiches, paninis, salads, coffee and other snacks.

ENSTA PARIS*

The “**Cœur de blé**” cafeteria is open from 8:00am to 5:30pm Monday to Thursday, and until 5:00pm on Friday. You can have a quick-service breakfast or lunch including sandwiches, salads, pies, quiches, paninis, hot dishes, and desserts.

ENSAE PARIS*

Located about 10 minutes from our building, ENSTA Paris has a cafeteria on the ground floor of the building.

*To date, agreements are in development within the alliance of IP Paris. While they are being finalized, the meals purchased in these restaurants are at the “external rate”.

HOTEL ACCOMODATION FOR GUESTS

For students, professors or researchers visiting the school, the Aparthotel Adagio Access Palaiseau Saclay, which is located a few meters from our building, has 111 fully equipped studios that can accommodate from 1 to 4 people.



Studio for two people with a double bed



Studio for two people with two separate beds



Studio for three people with a double bed and a sofa bed



Studio for four people with one double bed and two sofa beds

The hotel is handicapped accessible and the staff speaks French and English.
All studios have a fully equipped kitchen and air conditioning.

Adress: 6 boulevard Gaspard Monge – 91120 Palaiseau

Contact: +33 (0) 1 85 41 04 50 or ha0x3@adagio-city.com



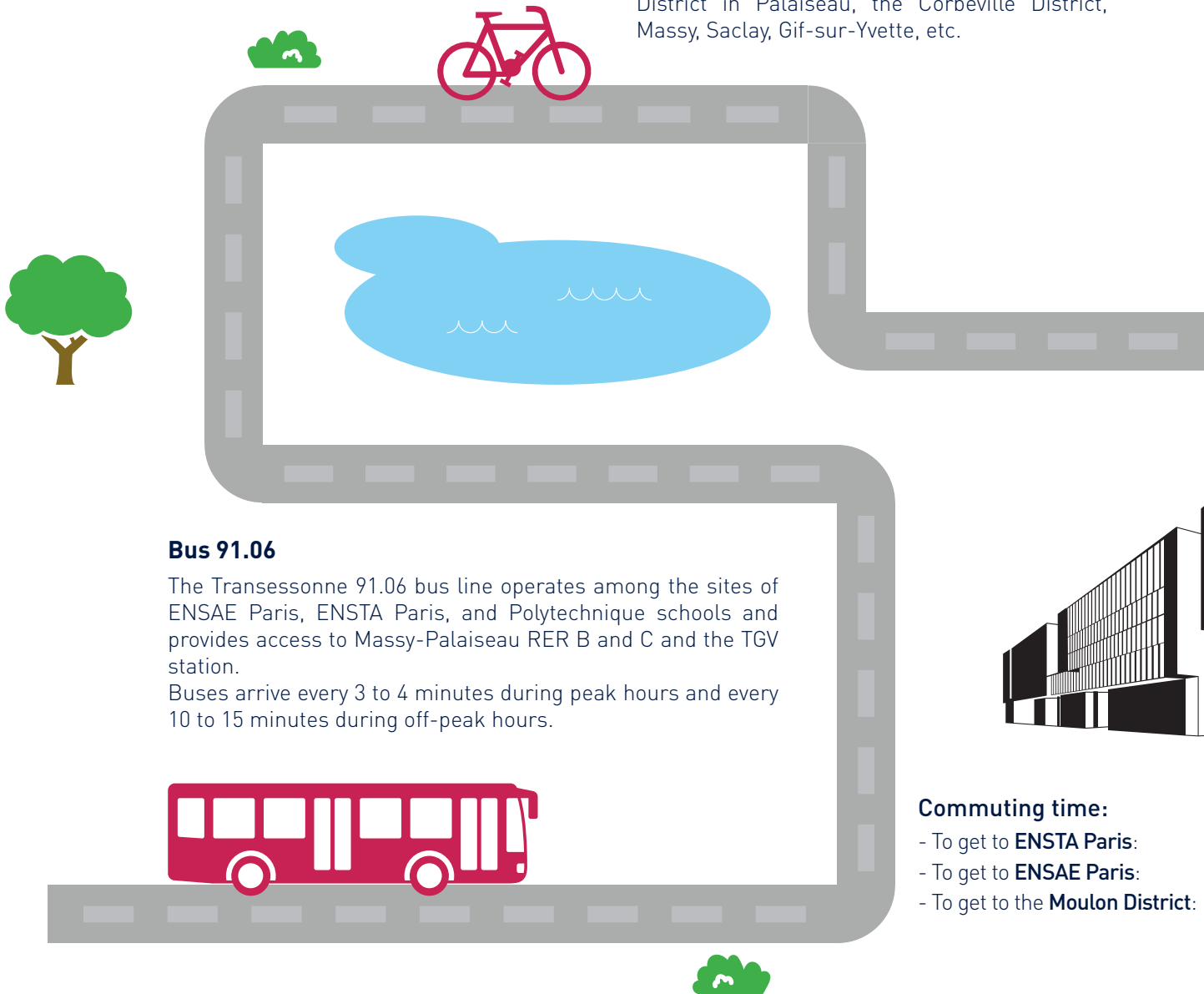
The Aparthotel Adagio Access Palaiseau Saclay offers breakfast, salads, and snacks to eat in or take away.

A Franprix supermarket and a bakery are located on the ground floor of the same building.

GETTING AROUND

Bike paths

Seven kilometers of bike paths are available on the Plateau de Saclay. They allow you to travel between the École polytechnique and Moulon districts, but also reach other surrounding districts and cities such as the Camille Claudel District in Palaiseau, the Corbeville District, Massy, Saclay, Gif-sur-Yvette, etc.



Bus 91.06

The Transessonne 91.06 bus line operates among the sites of ENSAE Paris, ENSTA Paris, and Polytechnique schools and provides access to Massy-Palaiseau RER B and C and the TGV station.

Buses arrive every 3 to 4 minutes during peak hours and every 10 to 15 minutes during off-peak hours.

Commuting time:

- To get to **ENSTA Paris**:
- To get to **ENSAE Paris**:
- To get to the **Moulon District**:



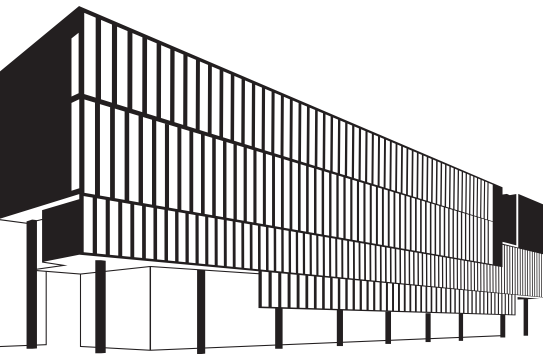
Shared electric bikes



Zoov is an electric bike service currently operating on the Plateau de Saclay.

Five hundred bicycles will be available by the end of the year, and a total of 2,000 bicycles will be available on the Plateau de Saclay during the year 2020. The bikes are free-floating and about 40 charging stations will soon be available and 100 stations will be available by the end of 2020.

This service costs riders €2 to unlock the bike and use it for 20 minutes.



20 minutes on foot / 5 minutes by bus / 7 minutes by bike
10 minutes on foot / 3 minutes by bike
about 6 minutes by bus / 15 minutes by bike



On foot

All around the school, many areas are now available, or in progress, to promote walking and pedestrian traffic.

A fitness path is currently in development to connect all the schools within the Institut Polytechnique de Paris.



DINING

SHOPPING

SERVICES

École polytechnique District

Panifique

This bakery and artisanal pastry shop offers varieties of pastries as well as salads, wraps, burgers, and daily specials. Includes seating indoors or take away options.

Open Monday to Saturday from
7:00am to 8:00pm
13 avenue de la Vauve
91120 Palaiseau

Living-Room

The Living-Room is a lounge restaurant specializing in seafood. The menu is varied, both in meat and fish, and the restaurant also offers a wide range of homemade desserts.

Open Monday to Saturday from
12:00pm to 2:30pm and from
7:00pm to 10:30pm. Closed on
Sundays.
10 boulevard Gaspard Monge
91120 Palaiseau

O Food Asia

This restaurant offers a wide range of Asian dishes, to eat in or take away.

Open everyday from 11am to 10pm
2 Boulevard Gaspard Monge,
91120 Palaiseau

Moulon District Brasserie At'Home

Chef Ludovic Logen proposes an inventive cuisine, a mix of culinary trends inspired by an international journey.

Open Monday to Friday from
11:45am to 2:00pm
9B rue Joliot Curie
91190 Gif-sur-Yvette

Le Bœuf à 6 pattes

This restaurant-grill offers quality meats cooked over a fire and dishes inspired by traditional French cuisine.

Open daily from 12:00pm to
2:30pm and from 7:00pm to
10:00pm .
Rue Francis Perrin, N118
91190 Gif-sur-Yvette

Camille Claudel District

Le Camille Claudel

Both a brasserie and a pizzeria this restaurant offers a very wide range of dishes including burgers, salads fish, meat, wood-stove pizza, etc.

Open daily from 11:30am to
2:30pm and from 6:30pm to
11:00pm
3 place des Causeuses
91120 Palaiseau

Take bus 91.06 to the
Camille Claudel stop

DINING	SHOPPING	SERVICES
<p>École polytechnique District</p> <p>Tobacco and Magazine Shop Le Saclay</p> <p>This shop offers multiple services including stationery, daily newspapers and 1,000 magazine titles, tobacco, electronic cigarettes, FDJ and PMU games, candy, cards, gifts, hot coffee and cold drinks.</p> <p>Open Monday to Saturday from 7:00am to 9:00pm. Closed on Sundays.</p> <p>8 boulevard Gaspard Monge 91120 Palaiseau</p>	<p>Franprix</p> <p>This supermarket offers all sorts of products needed on a daily basis. It's extremely close to the building and also has a dining area to eat purchased dishes.</p> <p>Open Monday to Saturday from 7:30am to 9:00pm. Closed on Sundays.</p> <p>15 avenue de la Vauve 91120 Palaiseau</p> <hr/> <p>Moulon District</p> <p>A pharmacy, bakery, tobacco shop, paper and press shop, and supermarket may soon open in the Moulon District, near the Serendicity Residence.</p> <p>Bus 91.06, Joliot Curie stop.</p>	<p>Jouy-en-Josas</p> <p>La Ferme de Viltain</p> <p>This supermarket is about ten minutes away by bus to Palaiseau and close to several student dorms.</p> <p>Open Monday to Saturday 7:00am to 9:00pm and on Sunday from 8:00am – 1:00pm.</p> <p>2 route de Saclay 91120 Palaiseau Bus 91.06, Camille Claudel stop</p>

DINING	SHOPPING	SERVICES
<p>École polytechnique District</p> <p>BNP Paribas bank Paris Saclay branch</p> <p>The Paris Saclay branch is open for your banking and transaction needs or to meet with a financial advisor. A cash machine is also available.</p> <p>Open Monday to Friday from 10:00am to 6:00pm and until 7:00pm on Thursdays.</p> <p>19 avenue de la Vauve 91120 Palaiseau</p>	<p>Moulon District</p> <p>A bank, doctor's office, optician, driving school, and hairdresser may soon open in the Moulon District, near the Serendicity Residence.</p> <p>Bus 91.06, Joliot Curie stop.</p>	<p>Camille Claudel District</p> <p>Pharmacie des Écoles - TRAN</p> <p>This pharmacy offers a wide range of pharmaceutical products as well as on-loan medical equipment. The pharmacists can also provide medical and homeopathic advice.</p> <p>Open Mondays from 2:30pm to 8:00pm and Tuesday to Friday from 9:00am to 12:30pm and from 2:30pm – 8:00pm.</p> <p>2 place des Causeuses 91120 Palaiseau Bus 91.06, Camille Claudel stop</p>



SPORTS & WELLNESS

École polytechnique Facilities

Within IP Paris, faculty and staff on the Plateau de Saclay have access to the École polytechnique facilities. Membership of the Club Sportif de l'X (CSX) gives access to a catalogue of some thirty activities at reduced rates.

Open Monday to Friday from 9:00am to 12:00pm

Bâtiment Bienvenue n°409
Route de Saclay
91128 Palaiseau Cedex
<https://www.csx-polytechnique.fr/>

**Contact: 01 69 33 25 51
or 01 69 33 25 60**

Paris-Saclay's university sports programme

In addition to access to École polytechnique's sports facilities and clubs, faculty and staff can register for practice sessions on the Paris-Saclay university sports portal. The annual registration fee is 40€ for two slots of weekly practice sessions and 10€ per additional slot.

More information is available on this website: <https://sports.universite-paris-saclay.fr/planning>

La Plaine des Sports

In the Moulon district, the Plaine des Sports is equipped with two football fields, two artificial-grass rugby pitches, an athletic track of 400m, a pitching area, and a drop zone. A sports complex will soon be built with four indoor tennis courts, a handball court, nine badminton courts, a climbing wall and a gym.

About a 15-minute ride on the Albatrans Express bus 91.06 and about 13 minutes away by bike.

Centre aquatique intercommunal La Vague

About ten minutes away with the Albatrans Express bus 91.06, La Vague Aquatic Centre offers a sports pool, a leisure pool and a relaxation area with sauna, hammam and jacuzzi. Courses are also offered throughout the week.

**Open every lunchtime. Check out the website <https://www.lavague-cps.com> for other opening hours.
19 rue Maximilien Robespierre
91120 Palaiseau**

Multipurpose exercise studio

On the ground floor in room 0A301, just by the student association premises, is a multipurpose exercise studio available for members of staff or for the organization of exercise classes.

Le parc Eugène Chanlon

Just minutes away from our building, the Eugène Chanlon intermunicipal park offers visitors the opportunity to treat themselves to a break in the middle of the forest. The park is also known to be an authorized climbing site in a natural environment. The La Troche sandstone quarry has boulders averaging 5 meters high. Three circuits are identified, with increasing levels of difficulty. The most exposed routes are secured at the top, which allows for anchoring and rappelling.

ATO Club

This is a tennis club in the Moulon district, which is affiliated to the French Tennis Federation. It has a shop and a restaurant, a court that can be reserved and the opportunity for lessons.

**Open Monday to Friday 8:00am to 11:00pm.
<https://www.ato-club.com/>
3 rue Nicolas Appert
91400 Orsay**

ALOES



The Association pour les Loisirs et les Œuvres Sociales (Aloes) is the staff association of IMT and Telecom Paris. Its aim is to promote all cultural, sporting and social activities.

Aloes offers both subsidized and unsubsidized leisure packages, but at highly reduced prices. To become a member of Aloes, register during their office hours. Membership costs 18€ (per calendar year), to be paid by cheque or bank transfer.

Among the services offered:

- Christmas party for the children of the staff with a different theme every year,
- Trips and weekend activities,
- Sports classes (gym, karate, swimming, etc.),
- Music lessons,
- Discounted cinema tickets,
- School choir.

Check out Aloes the website for more information:

www.telecomparistech.comiteo.net

Their services and activities are frequently updated so be sure to check the website regularly.

Contacts:

Georgette Sika: 9948

Nadia Mezi: 4118

Florence Besnard: 9849

Catherine Vazza: 9426

Office hours are half a day, every other Thursday, in room 2A446.



ATSCAF-Paris

This **Association for Sports and Cultural Tourism of the Financial Administrations** of Paris (ATSCAF) offers the staff of the Institut Mines-Télécom various benefits.

These may be subsidized tickets for various events: shows, cabarets, theatre, sports events (football, rugby), as well as museums and national monuments.

ATSCAF-Paris also offers reduced rates for cruises on the Seine. And finally, the association offers members discounts for gym memberships or movie tickets.

IMT employees can take advantage of the same reduced prices as ministry agents: 23€ per employee and, for the sports clubs and travel, 12€ per spouse and per child under 25 who is still living in the household.

Membership runs for one academic year: from September 1st to August 31.

For more information:

<https://www.atscaf.paris>



SUSTAINABLE DEVELOPEMENT



An HQE building

The Palaiseau building has been designed for High Quality Environmental (HQE) classification. HQE is a voluntary approach to managing the impact on the environment generated by a building while providing its occupants with healthy and comfortable conditions throughout the life of the structure.

The heating network of the Plateau de Saclay

The Paris-Saclay urban campus has been awarded the "Positive Energy Territory for Green Growth" (TEPCV) label. The Établissement Public d'Aménagement de Paris-Saclay (EPAPS) has set up a heating network based on deep geothermal energy. This network is supplied by the Albién geothermal groundwater table located at a depth of 700 metres and heated naturally to 30°C. All the buildings are powered by 60% renewable energy and emit three times less CO2 emissions than a traditional system. The implementation of such a solution of this scale will be a worldwide first of its kind thus rendering Paris-Saclay a remarkable technological showcase.



Recycling and waste management

In our new building, two waste collections are planned by the service provider, a collection of ordinary trash and a collection of paper and cardboard. A special collection system has been set up for "computer waste" (D3E); collection and recycling or disposal are carried out in an environmentally-friendly manner. Procedures are also in place for removal requests of liquids or hazardous materials.

Recharging stations for bicycles and electric cars

To encourage the use of mobility options that are low-impact for the environment, several initiatives have been launched on the Plateau de Saclay. Power stations for electric bicycles are at the foot of our building and the surrounding areas (Nano-INNOV, Horiba, Thales, Danone, etc.). Electric vehicle charging stations are also available in our building (15 at the time of our move) and in the surrounding areas (Nano-INNOV, Horiba and in the future parking garage that will open in 2020).



The commitment of our catering service provider, Elior

The Elior Group is dedicated to four societal responsibilities, including the sustainable supply of ingredients and the elimination of food waste. In addition to meeting these commitments, our catering service provider in Palaiseau is committed to respecting proper sorting and recovery of bio-waste, as well as to the use of 100% biodegradable cleaning products whenever possible.

PATRONAGE

Endowed Spaces

You will notice that some spaces, or seats in the main Thevenin amphitheater, are named after certain individuals. These are the names of those who have generously offered a donation to the school. Patronage, or endowment, is the act of showing appreciation for a financial donor (e.g. an individual, company, group of people, etc.) by placing their name on a space or piece of equipment. Endowment can be for a limited period of time or for life. In our building, we have offered patrons the choice to name a space for ten years or for life, depending on the amount given. The patron's name is written on a plaque at the entrance of the space or on the seat chosen by the donor. Donors are mainly alumni but also parents of students. It's a special way for them to show their appreciation for the school.

The act of honoring donors on campus property was first introduced in the United States in cultural and higher education institutions. In France, this practice is still quite recent and is mainly seen in stadiums and cultural spaces. Other leading engineering schools, such as Polytechnique and CentraleSupélec, have launched major patronage campaigns to cultivate their resources and foster the improvement of their schools. In this context, Télécom Paris has launched its own support and development campaign.

The funds raised through this patronage campaign are used to finance the school's four main pillars: social diversity - international initiatives - entrepreneurship - scientific excellence and innovation.

Thanks to these donations, students receive scholarships for academic achievement, others can expand their academic horizons, talented professors are recruited, and equipment is financed. This is an exceptional opportunity for the school to prosper in the new ecosystem of the Institut Polytechnique de Paris.

Since 2014, this initiative has raised €750,000.

Percent for Art

The term Percent for Art refers to a program where a percentage of the cost of large-scale development projects is dedicated to fund and install public art.

For our new building, the work of the visual artist Evariste Richer and his team was selected. INFRAWIND & METACLOUD is a dual-discourse work. The artist, born in 1969 in Montpellier, describes the creation as "Poetry" which exalts the architects' undertaking and the "Meteorological" map of the community spaces of the building.

In his own words, "The INFRAWIND & METACLOUD weather map, inspired by cloud patterns, the compass rose, and the interlocking filaments of feathers, or barbules, is spread throughout the entire site. Through this work, I have composed a new framework of architecture, revealing a changing climatic landscape intertwined with engineering and science."

Evariste Richer associates each floor with a shade of blue, giving way to isolated clouds on large enameled plates in the main lobby and wind roses to indicate the directions to the different spaces.

The furnishings, in a seventh shade of blue, complete the system. Tables, benches and stools, in the interlocking barbules, symbolize the breeze and accompany the movements of staff and students within the building.





Télécom Paris

**19, place Marguerite Perey
CS-20031
91123 Palaiseau Cedex**

